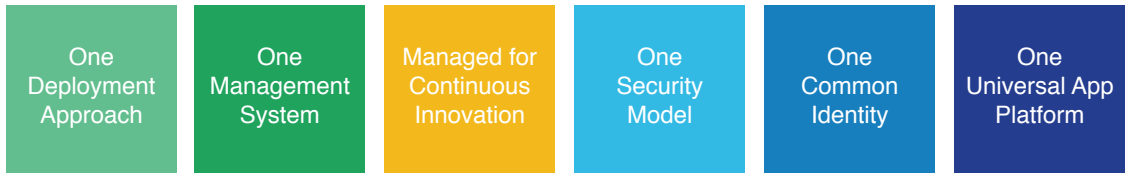




## Windows 10 Enterprise Workshop

With Windows 10 as your underlying operating system, you can provide your end users with the ability to work simply, effectively and without limitation across multiple devices and applications.



Importantly Windows 10 also provides advanced protection against modern security threats.

Microsoft believes effective security should be end-to-end - from desktop to server. Windows 10 includes industry-leading encryption, anti-malware technologies, and identity and access solutions that move you from passwords to more secure forms of authentication:

**Windows Defender:** a robust anti-malware solution that detects threats quickly and immediately protects devices wherever they are in your environment.

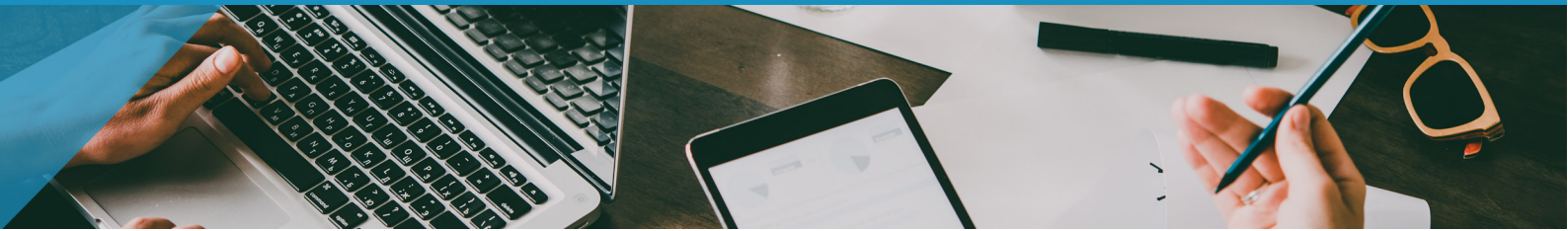
**Windows Defender Advanced Threat Protection (ATP):** advanced breach detection, investigation, and response capabilities across all your endpoints, with up to six months of historical data. Helps address a key requirement of the General Data Protection Regulation (GDPR) that companies have clear procedures for detecting, investigating, and reporting data breaches.

**Windows Defender Device Guard:** allows lock down of devices and servers to protect against new and unknown malware variants and advanced persistent threats. Unlike detection-based solutions such as anti-virus programmes that need constant updating, Device Guard locks down devices so they can only run authorised applications.

**Windows Defender Credential Guard:** isolates your secrets on a device, like single sign-on tokens, from access even in the event of a full Windows operating system compromise. Prevents attacks by protecting NTLM password hashes, Kerberos Ticket Granting Tickets, and credentials stored by applications as domain credentials.

**BitLocker Drive Encryption in Windows 10:** enterprise-grade encryption to protect data when a device is lost or stolen by fully encrypting your computer's disk and flash drives to prevent unauthorised users accessing your data.

**Windows Information Protection:** while BitLocker protects the entire disk of a device, Windows Information Protection protects your data from unauthorised users and applications running on a machine. It also helps to stop data leaking from business to non-business documents or to locations on the web.



## Windows 10 Enterprise Workshop

Microsoft Windows 10 is not just a simple desktop operating system upgrade. Ensuring a seamless migration and successful deployment involves careful planning, as well as detailed knowledge of the operational requirements needed to manage the estate through its lifecycle once deployed - which is where the Windows 10 Enterprise Workshop from SystemsUp can help.

We will assess your readiness for Windows 10 and show how it will help reduce IT costs. We will also look at the associated capabilities and tools, such as co-management and AutoPilot, that can support your move to and management of Windows 10 as well as advise on new operational requirements

### The objectives of our Windows 10 Enterprise Workshop are to:

- ◆ Understand your current environment, to provide a roadmap of activities to ensure seamless migration and a successful deployment
- ◆ Demonstrate the tools at your disposal to assist in the transition to modern management for your current and future client estate, including cloud-driven adoption and deployment
- ◆ Provide insight into the new features and capabilities that Windows 10 can provide once you have adopted the platform
- ◆ Discuss the new operational requirements, and approach to lifecycle management required to ensure your Windows 10 estate remains evergreen

### Microsoft Partner

- Gold Cloud Platform
- Gold Devices and Deployment
- Gold Identity and Access
- Gold Hosting
- Gold Datacenter
- Silver Cloud Productivity
- Silver Intelligent Systems
- Silver Application Development
- Silver Messaging

The workshop will approach each topic area with some assessment questions and confirmation of prior knowledge about your environment.

At the end of this process, the technical approach and solution will be proven, and you will have a clear idea of the best approach to take to migrate to, and manage Windows 10.

### About SystemsUp

SystemsUp is a highly regarded professional services company and delivers outstanding cloud consultancy services with consistent year-on-year growth through the success of our clients.

SystemsUp delivers successful cloud transformation engagements in the public and private sectors. Our clients range from high profile government departments, FTSE 100 and global blue chip companies, to smaller specialist organisations and application vendors across all markets.